

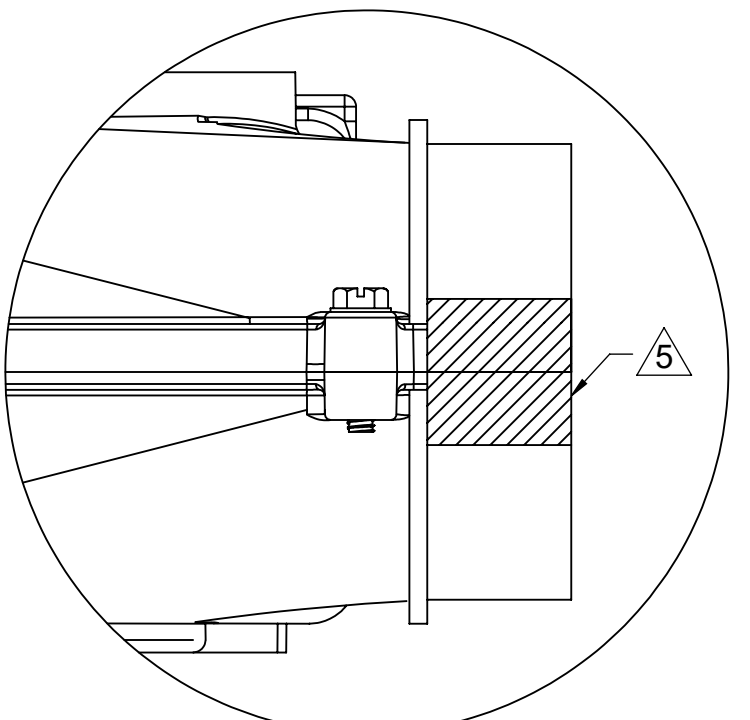
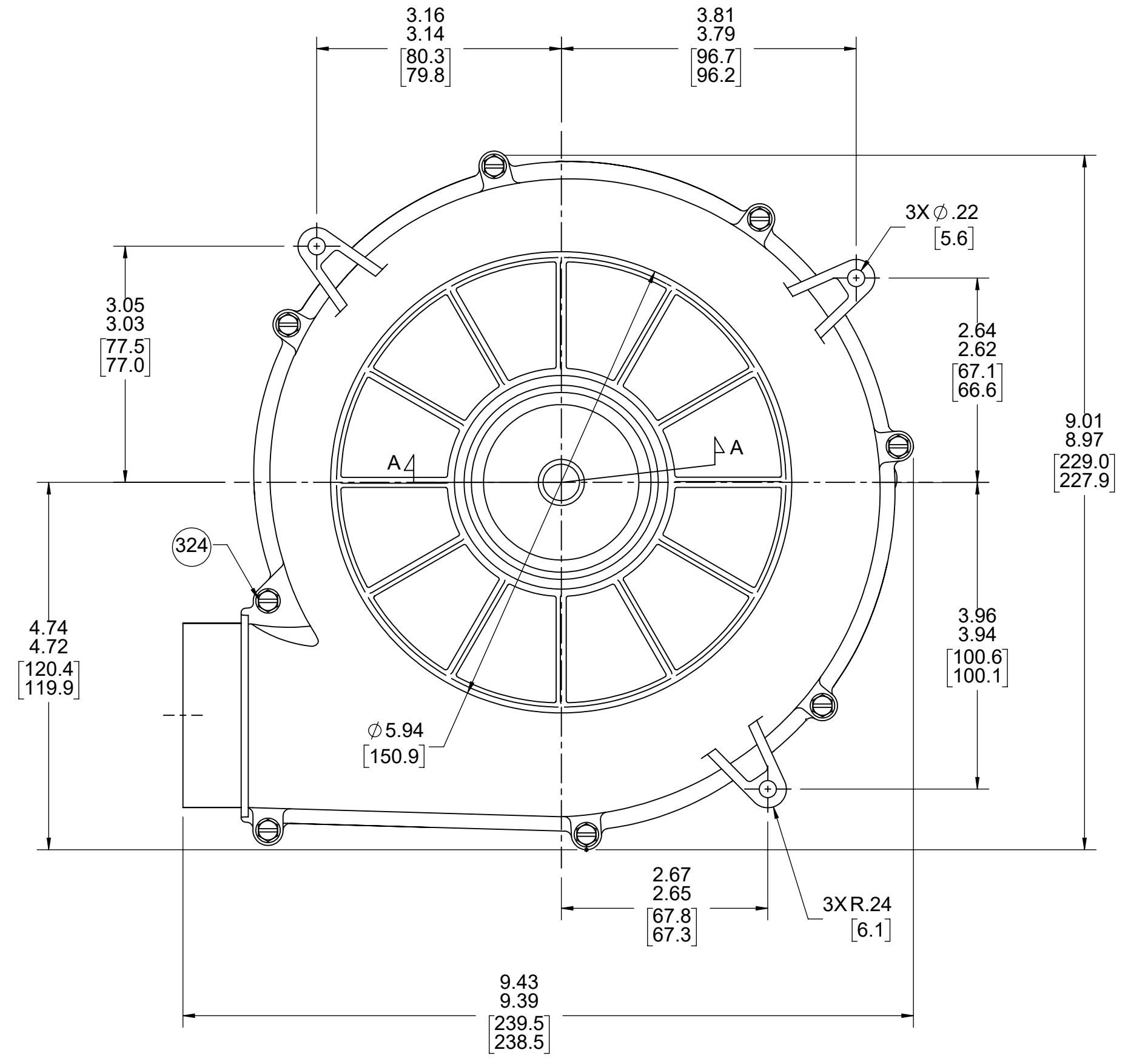
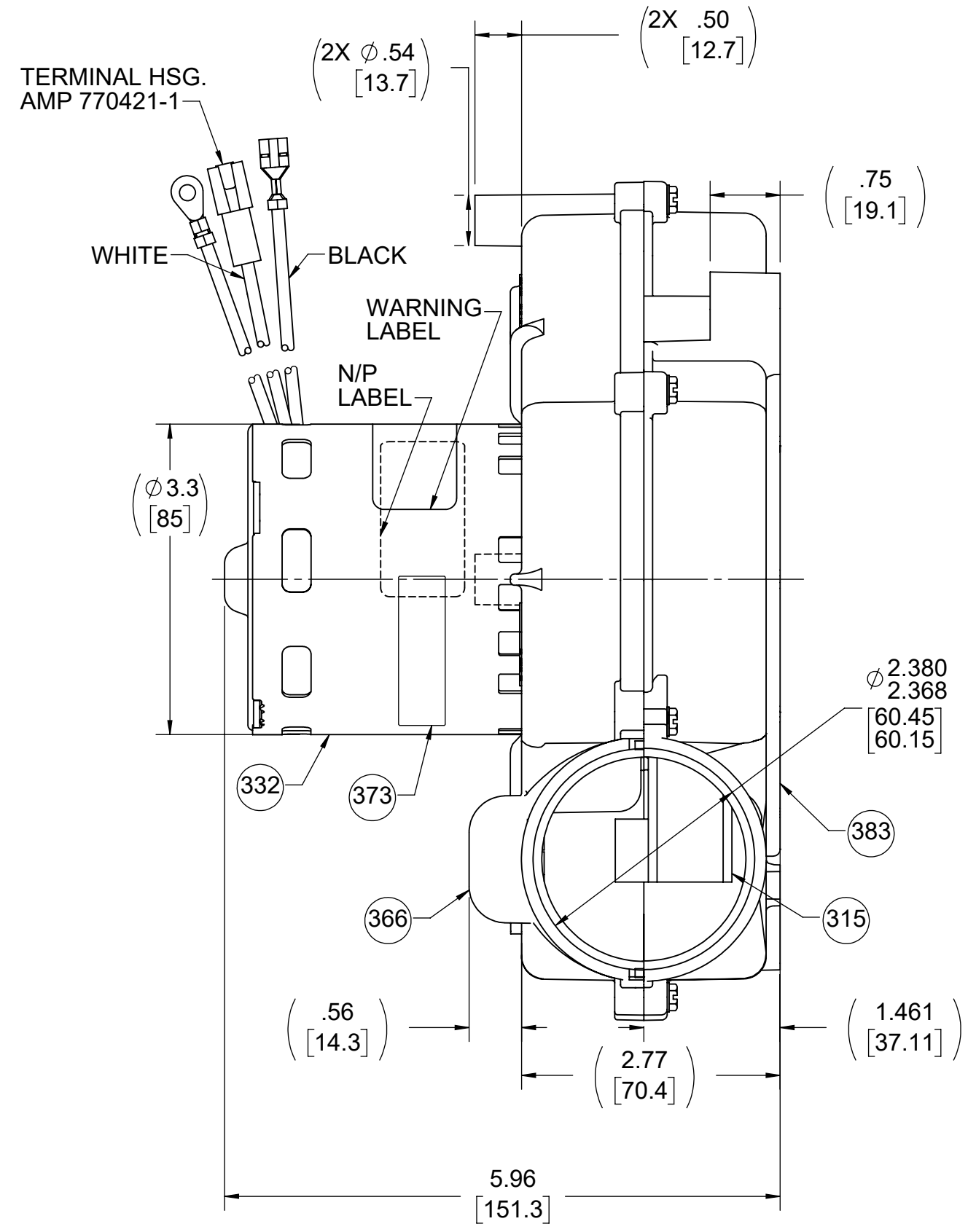
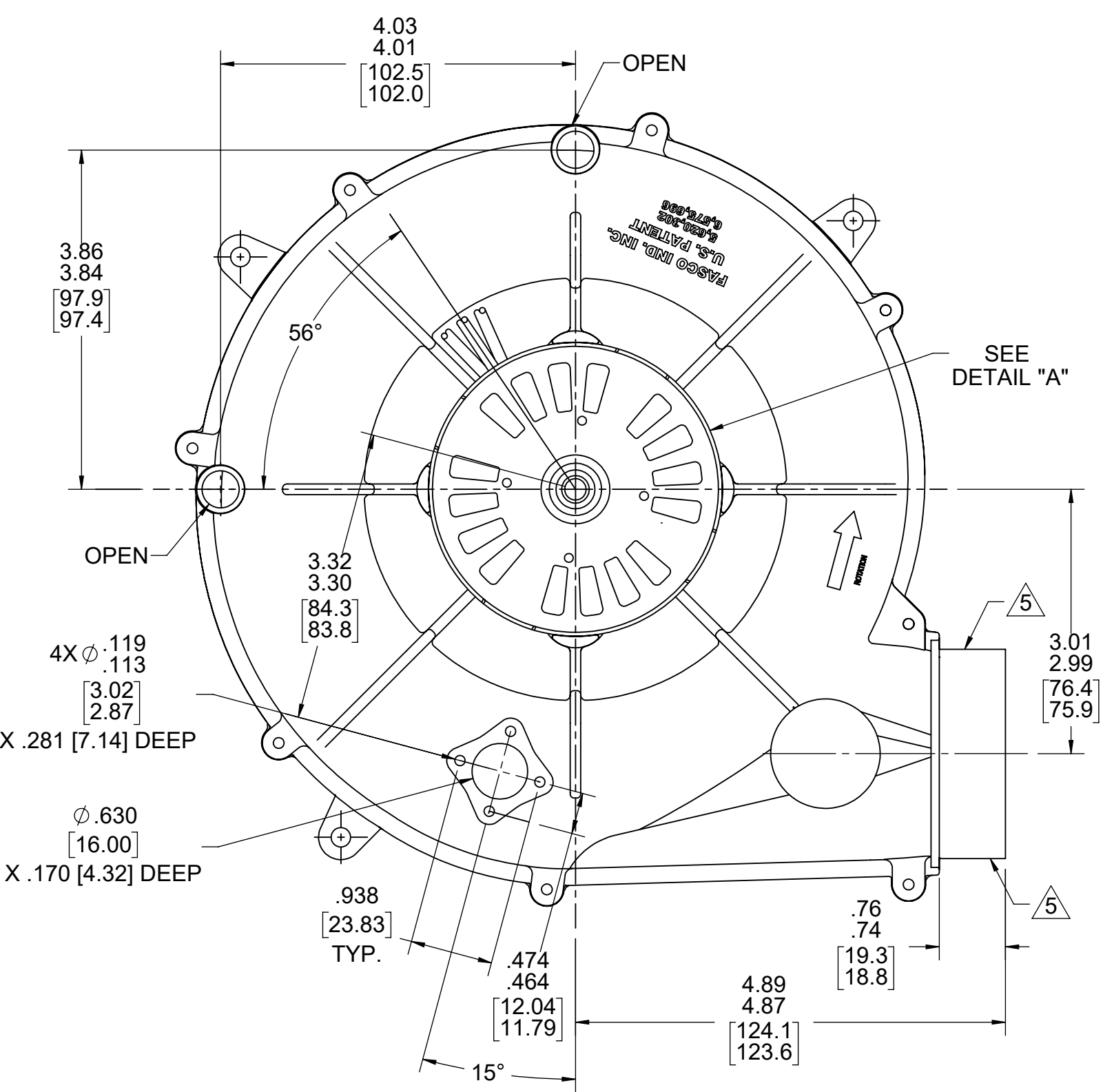
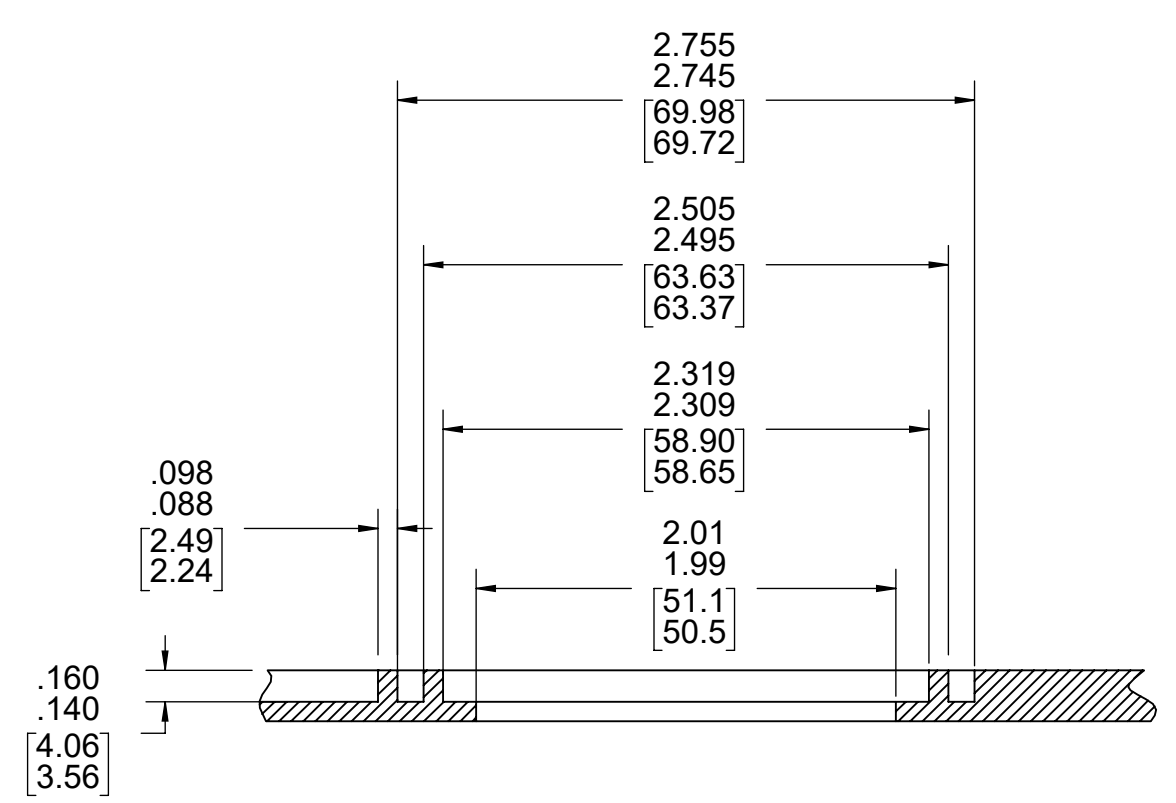
- NOTES:
1. PACK 1 PER CONTAINER, 36 MAX PER PALLET, PACKING ASSY: 87854714, 12 CONTAINERS PER LAYER, 3 LAYERS PER PALLET, PER 88834200.
 2. CARTON LABELS MUST ALL FACE ONE DIRECTION TOWARD THE OPEN END OF THE PALLET, PER 88834408.
 3. NO PACKING TAPE OVER CARTON LABEL.
 4. EACH ASSEMBLY TO BE UNIT BALANCED .004 [.10] MAX. USING EASY BALANCER.
 5. APPLY AND SPREAD THIN LAYER (APPROX. .025 [.64] THICK X .38 [9.7] WIDE) OF PC 391 SEALANT TO TOP AND BOTTOM OF EXHAUST WHERE SHELLS BUTT AGAINST EACH OTHER.

THERMALLY PROTECTED CLASS "B" INSULATION SEALED BALL BEARING 416 SS SHAFT

APPLICATION:	DIST.	B	LA	FR	A	S	C	E	B	A
CUSTOMER:	FASCO DIST.	PF	21	30	F	05	BN	5	0	0
CUSTOMER PN:	A195									

LEAD MATERIAL
 18 GA. 125°C 2/64 INSUL.
 X-LINKED POLY. (1) WHITE
 7.00/5.00 [177.8/127.0]
 W/ PIN TERM.
 AMP 350218-1
 AND (1) BLACK
 11.00/9.00 [279.4/228.6]
 W/ FSPADE TERM.
 AMP 63306-1
 GRN/YEL GROUND LEAD
 15.00/13.00 [381.0/330.2]
 W/ RING TERM.
 AMP 40955

INLET DETAIL A-A



61304158

ASSEMBLED IN MEXICO

TYPICAL PERFORMANCE TEST DATA WITH 1 1/4 INLET RESTRICTOR AT 115 VOLTS 60 Hz

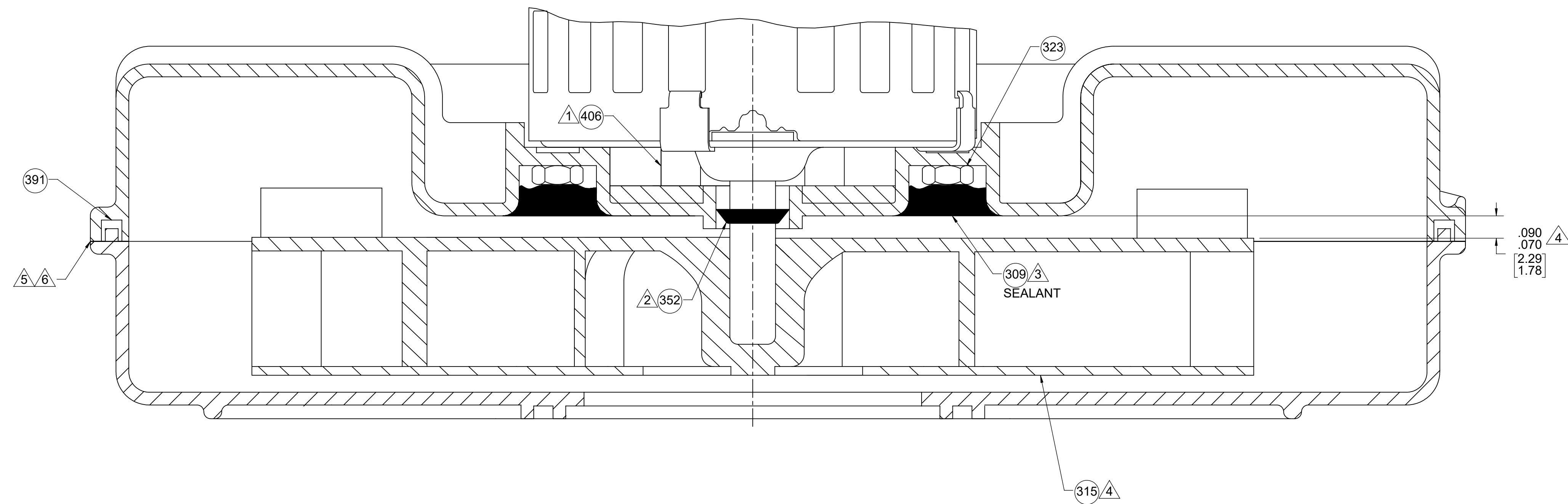
	RPM	WATTS	AMPS
	3396	109	1.64

BLOWER WEIGHT 4.5 LBS. ENDDPLAY .XX/XX

DRAWING REVISION: MC	REVISION BY: KKM	REV DATE/DATE: 2/20/2023	TOLERANCES (EXCEPT AS NOTED): DEC. INCH mm ANGLE	DRAWN BY: MLS	Regal Beloit America, Inc.
REQUEST NUMBER: EOR-0223431	APPROVED BY: PLA	DATE: 2/20/2023	XXX ±0.01 [±0.3] XXX ±0.005 [±0.13] XXXX ±0.0005 [±0.013]	DATE: 3/10/2015	
REQUEST NUMBER DESCRIPTION: CHANGED PACKING ASSEMBLY			REMOVE BURRS & BREAK SHARP EDGES: .003/.015 [08/38] X 45°	APPROVED BY: SDM	DESCRIPTION: OUTLINE BLOWER ASSY
<small>COPYRIGHT (PER REGISTRATION) TO REGAL BELOIT AMERICA INC. ALL RIGHTS RESERVED. PROPRIETARY AND CONFIDENTIAL INFORMATION - THIS DOCUMENT IS THE PROPERTY OF REGAL BELOIT AMERICA INC. OWNERSHIP AND CONTENTS OWNERS PROPRIETARY INFORMATION. ANY PERSON, CORPORATION OR OTHER FIRM RECEIVING IT IS DEEMED BY RECEIVING IT TO AGREE THAT IT, AND ANY PART OF IT, SHALL NOT BE DISCLOSED TO ANY PERSON, CORPORATION OR OTHER ENTITY, DUPLICATED, AND/OR USED, EXCEPT AS EXPRESSLY APPROVED IN WRITING IN ADVANCE BY OWNER. THIS DOCUMENT SHALL BE RETURNED TO OWNER UPON REQUEST. IT MAY BE SUBJECT TO CERTAIN RESTRICTIONS UNDER APPLICABLE EXPORT CONTROL LAWS AND REGULATIONS.</small>			CORNER FILLETS: R.02 [5] MACHINED SURFACES: 125/ INCH mm 3.2/ mm DIMENSIONS IN [BRACKETS] ARE FOR REFERENCE ONLY	DATE: 3/10/2015	MATERIAL: PROCESS/FINISH: FLAT BLACK
THIRD ANGLE PROJECTION				REFERENCE: SIZE: D	DRAWING NUMBER: 702111726
					SHEET: 1 OF 2

NOTES:

1. ASSEMBLE PC 406 SEAL TO MOTOR CENTERED OVER SHAFT WITH ADHESIVE SIDE ON MOTOR.
2. PC 352 OIL SLINGER MUST BE LOCATED ON SHAFT AS SHOWN BELOW.
3. BEFORE ASSEMBLING IMPELLER TO SHAFT, PRESS PC 399 ROPE SEALANT AGAINST EXPOSED FACE OF NUTS TO PROTECT FROM CORROSIVES.
4. PRESS IMPELLER ASSEMBLY ONTO SHAFT AND LOCATE SHOWN ON DRAWING.
5. LINE UP HOUSING HALVES WITH THREE PILOTS. SECURE WITH EIGHT SCREWS. TORQUE SCREWS TO 7 IN. LBS. MAX. NO AIR GAPS ALLOWED BETWEEN HOUSING HALVES. NOTE: PLASTIC STRIPS AT TORQUE SETTINGS ABOVE 7 IN. LBS.
6. WHEN EQUIPPED WITH A WATER SEAL, EVERY 20TH BLOWER IS TO BE CHECKED FOR WATER LEAKAGE. IF LEAKERS ARE DISCOVERED, CONTACT ENGINEERING. USE 1/3 PARTS MR. BUBBLE TO 2/3 PARTS WATER.
7. UNIT BALANCE PER 88834409.



DRAWING REVISION MC	REVISION BY KKM	REV DATE/DATE 2/20/2023	TOLERANCES (EXCEPT AS NOTED): DEC. INCH mm ANGLE X ±0.1 [-3] ±1° XX ±0.01 [-0.3] XXX ±0.005 [-0.13] XXXX ±0.0005 [-0.013] REMOVE BURRS & BREAK SHARP EDGES: .003/.015 [.08/.38] X 45° CORNER FILLETS: R.02 [-.5] MACHINED SURFACES: 125/ INCH/mm 3.2/ mm DIMENSIONS IN [BRACKETS] ARE FOR REFERENCE ONLY	DRAWN BY MLS	DATE 3/10/2015	DESCRIPTION OUTLINE BLOWER ASSY
REQUEST NUMBER EOR-0223431	APPROVED BY PLA	DATE 2/20/2023		APPROVED BY SDM	DATE 3/10/2015	
REQUEST NUMBER DESCRIPTION CHANGED PACKING ASSEMBLY						
<small>COPYRIGHT (P) BY REGAL BELTO AMERICA INC. ALL RIGHTS RESERVED. PROPRIETARY AND CONFIDENTIAL INFORMATION - THIS DOCUMENT IS THE PROPERTY OF REGAL BELTO AMERICA INC. OWNERS AND CONTAINS OWNERS PROPRIETARY INFORMATION. ANY PERSON, CORPORATION OR OTHER FIRM RECEIVING IT IS DEEMED BY RECEIVING IT, TO AGREE THAT IT, AND/OR ANY PART OF IT, SHALL NOT BE DISCLOSED TO ANY PERSON, CORPORATION OR OTHER ENTITY, DUPLICATED, AND/OR USED, EXCEPT AS EXPRESSLY APPROVED IN WRITING IN ADVANCE BY OWNER. THIS DOCUMENT SHALL BE RETURNED TO OWNER UPON REQUEST. IT MAY BE SUBJECT TO CERTAIN RESTRICTIONS UNDER APPLICABLE EXPORT CONTROL LAWS AND REGULATIONS.</small>						
				THIRD ANGLE PROJECTION	SIZE D	DRAWING NUMBER 702111726
						PROCESS/FINISH FLAT BLACK
						SHEET 2 OF 2